

EasIR™ Series is an easy-to-use infrared camera

EasIR™ Series is a new infrared camera of Guide infrared, breaking the infrared world with high performance and low price. Designed for tough work environments and entry-level users, EasIR™ Series is far more robust and shock-resistant for any tough working environment. One-hand easy operation allows users to use the camera without training. Featured with the latest Infra Fusion technology, it helps you pin-point the problem exactly and efficiently. EasIR, easy IR camera for your work.

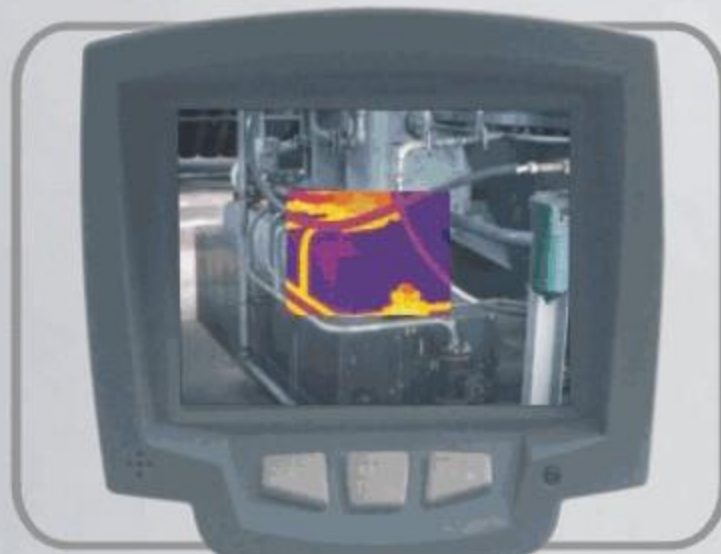
Features and Benefits



Auto Focus

both infrared and visual image can be easily focused

Flexible Battery Compatibility
never worry about the battery replacement



Infra Fusion

helping you identify where the problem exactly is

Navigation Interface
Easy operation without manual instruction



Rugged Design

Capability of drop-resist from 2m



Applications

- Predictive and preventative maintenance
- Electrical inspection
- Building diagnostics
- Technical diagnostics
- Veterinarian helper



Specifications

EasIR™-4

EasIR™-2

EasIR™-1

Thermal			
Detector Type	Uncooled FPA Microbolometer		
Spectral Range	8 to 14 μm		
Pixels	160 x 120, 25 μm		
Thermal Sensitivity	0.1 $^{\circ}\text{C}$ @30 $^{\circ}\text{C}$		
Lens/ FOV	11mm 20.6° X 15.5°		
Focus	Automatic and motorised (thermal & visual)	motorised (thermal)	motorised (thermal)
Image Frequency	50HZ PAL/ 60HZ NTSC	50HZ	50HZ
Palette	8	6	4
Visual			
Built-in Digital Video	CMOS Sensor, 1600x1200 pixels(2Mpixels), 2 ²⁴ true colors		N/A
Imaging Display			
External Display	3.6" TFT LCD screen		
Video Output	PAL/NTSC	N/A	N/A
Infra Fusion	Visual and IR blending	Visual and IR blending	N/A
Live thermal video recording	video recording via USB to PC	N/A	N/A
Built-in Flash	Yes	Yes	N/A
Measurement			
Temperature Range	-20 $^{\circ}\text{C}$ to 250 $^{\circ}\text{C}$ (350 $^{\circ}\text{C}$, 1200 $^{\circ}\text{C}$ optional)		-20 $^{\circ}\text{C}$ to 250 $^{\circ}\text{C}$
Accuracy	± 2 $^{\circ}\text{C}$ or $\pm 2\%$ of reading		
Measurement modes	Hot/cold point mark and center point		
Image Storage			
Media	Removable 2GB Mini SD card		
File Format	JPEG with analysis records		
Voice Annotation	60 s / image	N/A	
Laser Locator			
Classification Type	Class 2 semiconductor laser		N/A
Man-Machine Communication			
USB2.0	For video and image transfer	For image transfer only	
Power System			
Battery Type	AA NiMH battery ,or AA Rechargeable Battery		
Charging System	In camera or in battery charger		
Environment			
Operating Temperature	-10 $^{\circ}\text{C}$ to +50 $^{\circ}\text{C}$		
Storage Temperature	-20 $^{\circ}\text{C}$ to +60 $^{\circ}\text{C}$		
Humidity	Operating and storing 10% to 95%, non-condensing		
Encapsulation	IP54 IEC 529 housing		
Shock	Operational: 25G, IEC68-2-29		
Vibration	Operational: 2G; IEC68-2-6		
Physical Characteristics			
Size	111mmX124mmX240mm		
Weight	0.73Kg		



Inspect electricity hot point



Inspect building structure



Monitoring and analysis heat distribution



Measure animal temperature



Evaluate equipment operating