

HOTSHOT[®] HDB

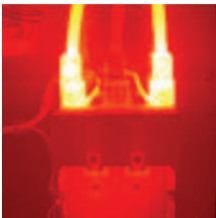
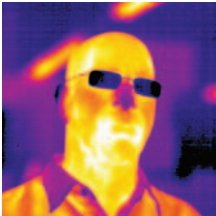
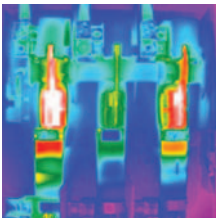
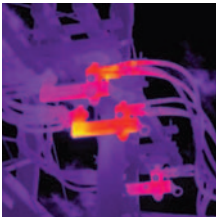
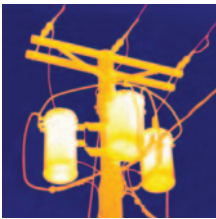
The choice of IR professionals

Think you can't afford 640x480 resolution?

Think again. Introducing HotShot HD-B – the thermography professional's choice in high performance infrared cameras. HotShot HD integrates state-of-the-art infrared imaging technology, a new dual laser hotspot highlighter and software functionality created to address the demands of heavy duty infrared camera users. Stunning 640x480 infrared image details combined with an integrated, high-quality megapixel visible camera and advanced image fusion greatly improves image interpretation and the quality of infrared inspection reports.

HotShot HD also features an integrated inspection data logger and route management system that can bring new levels of productivity to your IR inspection program. HotShot's

highly intuitive graphical user touchscreen interface puts nearly all commands within a single touch, eliminating complex pull-down menu controls.



The World's Best Infrared Camera for Building Diagnosis



HotShot HD – Simply the best value on the market today!

640x480 Resolution

- World's best image quality
- 0.05°C Thermal Sensitivity – Visualize smaller temperature differences
- Tight temperature scale control lets you optimize image contrast

Easy To Use

- Lightweight ergonomic design
- Touchscreen interface simplifies inspection data collection
- Highly intuitive interface reduces learning curve
- Automated report generation increases productivity up to 90%

Innovative Design

- Unique dual laser target marking system
- Advanced image fusion improves image interpretation.
- Lightweight miniature tablet style makes it comfortable to hold
- Unique dual laser target highlighter aids field work

Affordable Performance

- Application-specific packages offered
- Lowest ownership costs over 5 years
- 640x480 performance for 320x240 camera prices



HOTSHOT[®] HDB

The choice of IR professionals

ERGONOMIC DESIGN

View Objects at All Different Levels

Floor Level¹

Only HotShot keeps you comfortable whether you crouch to maintain a perpendicular view or stand upright and rotate the IR eyeball down to view objects at floor level.



Strike Zone¹

(belt level)

Every user has a different preference about holding tools. HotShot's infinite position IR eyeball enables you to hold the camera in the most comfortable position for you first and then rotate the camera to point at the object.



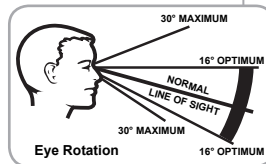
Overhead¹

When viewing overhead objects HotShot's articulating IR eyeball ensures that you maintain line of sight and optimal viewing angle and wrist position.



Viewing Angle²

While today's LCD displays feature improved viewing angle performance, LCD displays still work best when viewed perpendicular.



¹ Notice viewing angle and grip angle do not change over range of object viewing levels.

² Human Factors Specification Mil-Std 1472f

Standard Configuration

HotShot HD-B	PC Card Adapter
Lithium-Ion Batteries (2)	Hardside Carrying Case
Universal AC Power Supply	Battery Charger
USB Cable - Mini B Jack	Operator Manual
ViewIR Desktop Software	512MB CF Memory Card

Ordering Information

Item	Description
914833	HotShot HD-B
914643	ReportIR Multi-page Reporting Software
914756	RoutelR Software
914674	Fault Tree Manager Software
914636	Rechargeable Batteries

Specifications

Imaging Performance	
Resolution	640x480
Detector Type	VOx Microbolometer
Sensitivity	50mK (0.05°C)
Field of View / Min. Focus	25°x18° / 0.4m
Frame Rate	30Hz
Focus	Manual
Visible Camera	1280x1024 pixels, flash, torch
Image Presentation	
Image Modes	IR/Visual/Fusion
Display	3.5" 640x480 LCD touchscreen
Color Palettes	6
Measurement	
Temperature Range	-20°C to 100°C
Accuracy	±2°C or ±2% (whichever is greater)
Spot Size Ratio	500:1 (standard lens)
Measurement Modes	Point, Area (fixed)
Measurement Correction	emissivity, background/ambient
Image Storage and Camera Functionality	
Digital Media	512MB CF card (~600 hi-res images)
Internal Image Capacity	512MB (~600 hi-res images)
Recording Modes	Snapshot/sequence (optional)
Image Annotation	Touchscreen data logger GUI
In-Camera Routing	Optional
Target Marker	Dual laser line target identifier
Classification	Class 2
Power	
Battery Type	Rechargeable Lithium-Ion
Battery Run Time	2.5 hours
Battery Charging	10-16VDC input. Charging status LED
AC Power Supply	100-270 VAC, 50/60 Hz
Environmental	
Operating Temperature Range	-5°C to 50°C
Storage Temperature Range	-40°C to 70°C
Humidity	10% to 95%, IEC 360
Water and Dust	IP-54
Shock / Vibration	25G, IEC 68-2-29 / 2G, IEG 68-2-6
Physical	
Weight	2.7 lbs.
Dimensions (WxHxD)	7.5" x 7.5" x 3"
Interfaces	
Real-Time Digital Output	USB 2.0 (optional)
Image Transfer	USB 2.0, CF card
Video	NTSC
Desktop Software	
ViewIR	Included
ReportIR	Automatic multi-page report (optional)
RoutelR	Thermography program management software package (optional)
Fault Tree Manager	Equipment-type editor (optional)



373 Route 46, Fairfield, NJ 07004 973-882-0211 Fax: 973-882-0997
www.electrophysics.com

Proudly designed and built in the USA.