

MobIR[®]M2

Bottommost-cost Full-featured IR Thermal Camera MobIR[®] M2

MobIR is a mobile-like IR camera[®]



MobIR[®] M2



Bottommost-cost Full-featured IR Thermal Camera MobIR[®] M2

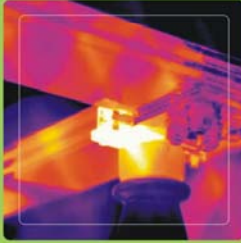
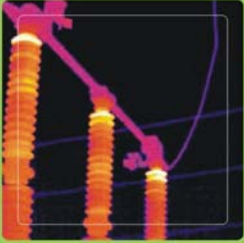
Featuring unique miniature architecture, razor-sharp image quality, precise fully radiometric measurement, point-and-shoot operation and reliable durability, the benchmark IR camera MobIR[®] M2 is another all-in-one system perfect for every level of thermography engineers from novice through to expert. Delivering more of everything you want in an IR camera at a price other full size cameras can never touch, no wonder it has proven your wisest selection out of all the low-cost IR cameras.

Features & Benefits

- Minimized ownership cost
- Ultra-compact, robust & easiest to use
- Accurate radiometric temperature measurement
- Advanced on-board image processing
- Integrated alarming, hot-spot tracing & laser locating
- Digital image storage with voice recording
- Versatile fast USB connectivity
- Professional analysis & reporting software
- License free & rapid delivery



Technical Specifications



Imaging Performance

Detector Type: Focal plane array (FPA) uncooled microbolometer ; 120×120 pixels
Spectral Range: 8 to 14 μm
Thermal Sensitivity: ≤120mk at 30°C
Image Frequency: 50Hz PAL/60Hz NTSC, non-interlaced
Field of View: 18.9° × 18.9°
Electronic Zoom: ×2

Image Presentation

External Display: 2.2" TFT & 1.2" CSTN high resolution color LCD
Display Color: 256 level, 5 palettes
Video Output: PAL/NTSC, composite video

Measurement

Temperature Range: -20°C~ +250°C (to be extended)
Accuracy: ±2°C or ± 2% of reading
Measurement Modes: Spot, area, isotherm, line profile, auto hot spot, auto alarm
Emissivity Correction: Variable from 0.01 to 1.00 (in 0.01 increment)
Measurement Features: Automatic correction based on user input for reflected ambient temperature, distance, relative humidity, atmospheric transmission and external optics

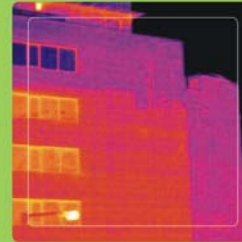
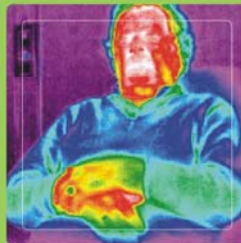


Image Storage

Type: Built-in Flash memory
Capacity: 100 images
Voice Annotation: Variant for different files, up to 30 seconds per file

System Status Indication

LCD Display: Display of battery status, indication of power
Sound Alarm: Automatic alarm for power shortage



Laser Locator

Classification: Class 2
Type: Semiconductor AlGaInp Diode Laser; 1mW/635nm (red)

Battery System

Type: Li-ion battery, rechargeable, field replaceable

Operating Time: Over 2 hours continuous operation

Charging System: In camera via USB interface from AC adapter(96- 250 VAC) or in battery charger

Power Dissipation: 2W

Environmental

Operating Temperature: -20℃~+60℃

Storage Temperature: -20℃~+60℃

Humidity: Operating and storing 10% to 95%, non- condensing

Encapsulation: IP54

Shock: Operational:25G, IEC 68-2-29

Vibration: Operational:2G, IEC 68-2-6

Interfaces

USB1.1: Image, measurement and digital video transfer to PC

Physical Characteristics

Size: 120mm× 60mm× 30mm

Weight: 0.265kg (including battery)

Guide

Wuhan Guide Infrared Technology Co., Ltd.

Add: NO.26 Shucheng Rd, Wuhan, 430070, P.R.China

Tel:86-27-87671925 87671926 87671991 87671983

Fax:86-27-87671927

Http://www.guide-infrared.com

E-mail:overseas@guide-infrared.com